

# Integral® Version 1.7 Announcement -201702

Labsphere, the world leader in light measurement, is proud to announce our latest **illuminia®Plus** software release: **Integral 1.7**.

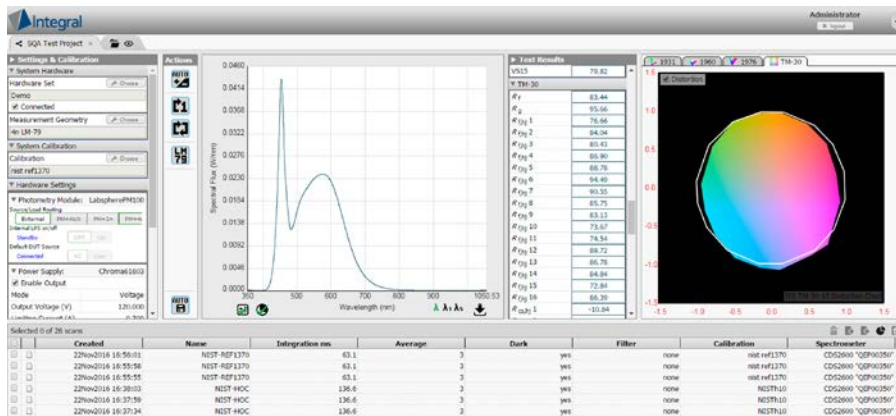
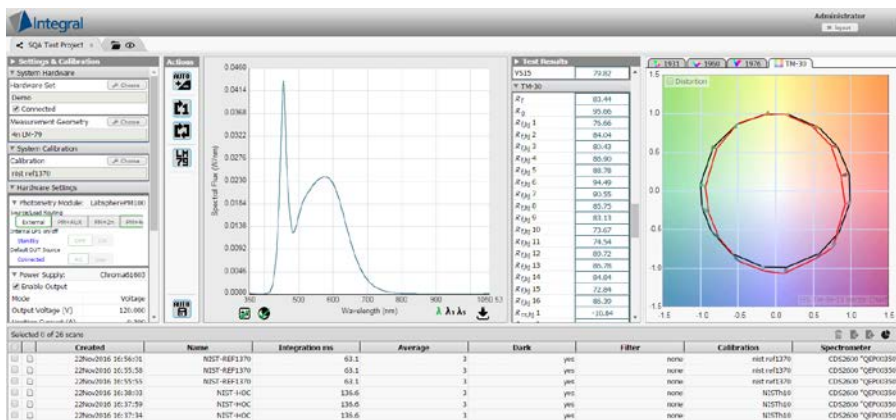
**Integral 1.7** adds significant new features to **illuminiaPlus**. These changes improve the quality, user experience and functionality of the software and provide greater flexibility, added analysis capability and user-friendly features, all designed to enhance your overall experience.

## **NEW FEATURES IN INTEGRAL 1.7**

In addition to all upgrades through Version 1.6 including Unlimited spectral range, Improved data management and Expanded Hardware Compatibility and Control Integral **V1.7 now has IES TM-30-15 reporting**.

Integral V1.7 has the latest method IESTM-30-15 for evaluating light source color rendition color. Integral V1.7 now includes:

- Reporting of High Level Average values of Fidelity Index and ( $R_f$ ) and Gamut Index ( $R_g$ )
- Graphic Representation in both Color Vector and Distortion



- As well as the more Detailed Values
  - Skin Fidelity ( $R_{t, \text{skin}}$ )
  - Fidelity by Hue ( $R_{t\#}$ )
  - Chroma Shift by Hue ( $R_{c\#}$ )
  - Fidelity by Sample ( $R_{t, \text{CES\#}}$ )

### **IMPORTANT NOTE**

Due to the update enabling increased spectrometer scan wavelength resolution all scans acquired in Integral Version 1.6 and newer must use calibrations created using versions 1.6 and newer. All scan acquired in Version 1.5 and older must use calibrations from Versions 1.5 and older. After updating to Version 1.7 you must perform new spectral flux calibration(s) on your system.

All previously-created scans are still available for viewing, exporting, and reporting as normal.

### **SUPPORT FOR GETTING STARTED WITH INTEGRAL 1.7**

Thank you for your continued use of Labsphere's Light Measurements Solutions. We are sure that you will find **Integral 1.7** software to be of significant benefit in improving your testing methodology and, more importantly, to have a positive impact in improving your efficiency and testing flexibility.

We look forward to our continued partnership with you and your company. If you have any questions, concerns or need help, please request Labsphere's Service Support by +1(603) 927-4266 or by e-mail at [Labsphere@labsphere.com](mailto:Labsphere@labsphere.com)

We appreciate any feedback you can offer us on **Integral** software or any other Labsphere products or services.